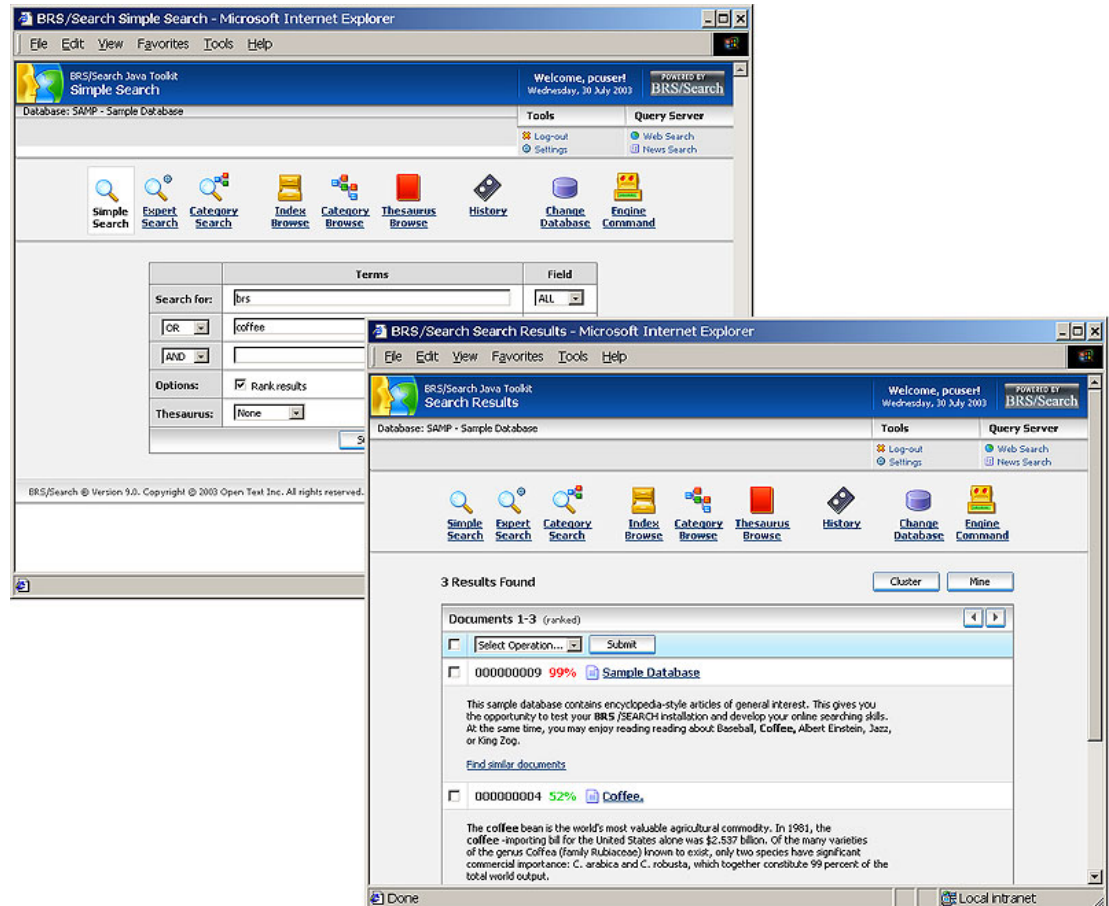


# Livelink Discovery Java Toolkit™

*Develop sophisticated Livelink Discovery Server™ Web applications*

## What is Livelink Discovery Java Toolkit?

Livelink Discovery Java Toolkit enables developers to integrate Livelink Discovery Server (formerly BRS/Search) features and functionality with their custom applications, leveraging the scalability and portability of the Java platform. In addition, it enables developers to extend the functionality of Livelink Discovery Server to better address particular enterprise needs.

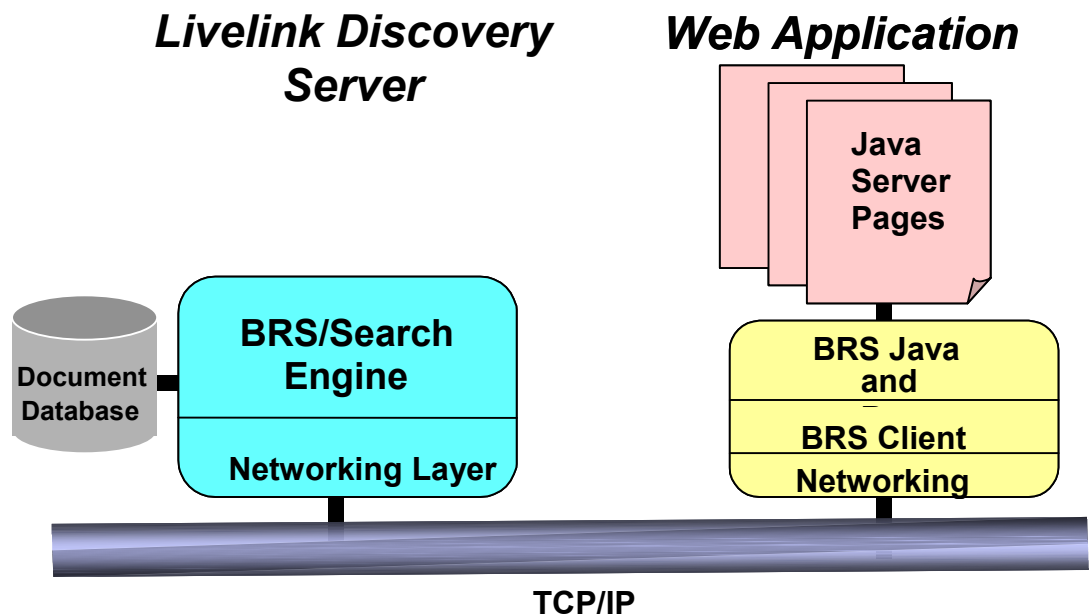


## Benefits

- **Improves Productivity**—The Java Toolkit improves the productivity of your interface development team by using Java Server Pages, Servlets, and Beans to create attractive and sophisticated Web applications with minimal programming.
- **Provides Greater Return on Livelink Discovery Server Investments**—Livelink Discovery Server includes many advanced search features, such as Boolean and metadata searching, natural language querying, result clustering, hit-highlighting, ANSI thesaurus browsing and more. With the Java Toolkit, you obtain even more value from these advanced search capabilities by being able to extend them to external Web content sources.
- **Reduces Development Time**—The combination of Java and the Java Toolkit makes the incorporation of Livelink Discovery Server into application development easy and economical. Java is simple to learn, easy to deploy and inexpensive to maintain.
- **Leverages Existing Enterprise Data**—With Java, you can continue to use installed Livelink Discovery Server applications and access the information easily.
- **Enables Rapid Integration of New Technologies**—The Java Toolkit enables new technologies with advanced programming features to access and support Livelink Discovery Server installations.

- Features**
- Database list and sign-on
  - Dynamic concatenation
  - Search with full parser and ranking, including fast ranking, natural language, and search detail
  - Display with plain text, Print-Time Formatting and XSL stylesheets
  - Selective caching of paragraph content for test/list efficiency
  - Command pass-through and customizable result display
  - History list and customizable result display
  - Index list, selection for search, customizable display
  - Thesaurus browse, expand, selection for search, customizable display
  - Thin client TCP/IP interface to server
  - Timeout detection (Java interface and Livelink Discovery Server)

### Java Toolkit Architecture



### Technical Requirements

- **Livelink Discovery Server Versions Supported**—Works with Livelink Discovery Server 8.1 on all supported platforms.
- **Tomcat Server**—Requires version 4.0.3
- **Java Development Kit**—Built on version 1.4.

**www.opentext.com**  
info@opentext.com

**North America Sales**  
1-800-499-6544

**International Sales**  
+800-4996-5440

#### Americas

2201 South Waukegan Road  
Bannockburn, IL  
USA 60015  
Phone: 847-267-9330  
Fax: 847-267-9332

#### Europe

Webster House  
22 Wycombe End  
Beaconsfield, Buckinghamshire  
England HP9 1NB  
Phone: +44 1494 679700  
Fax: +44 1494 679707

#### Asia/Pacific

138 Harris Street  
Pyrmont, NSW 2009  
Australia  
Phone: +61-2-9552-3334  
Fax: +61-2-9552-3446